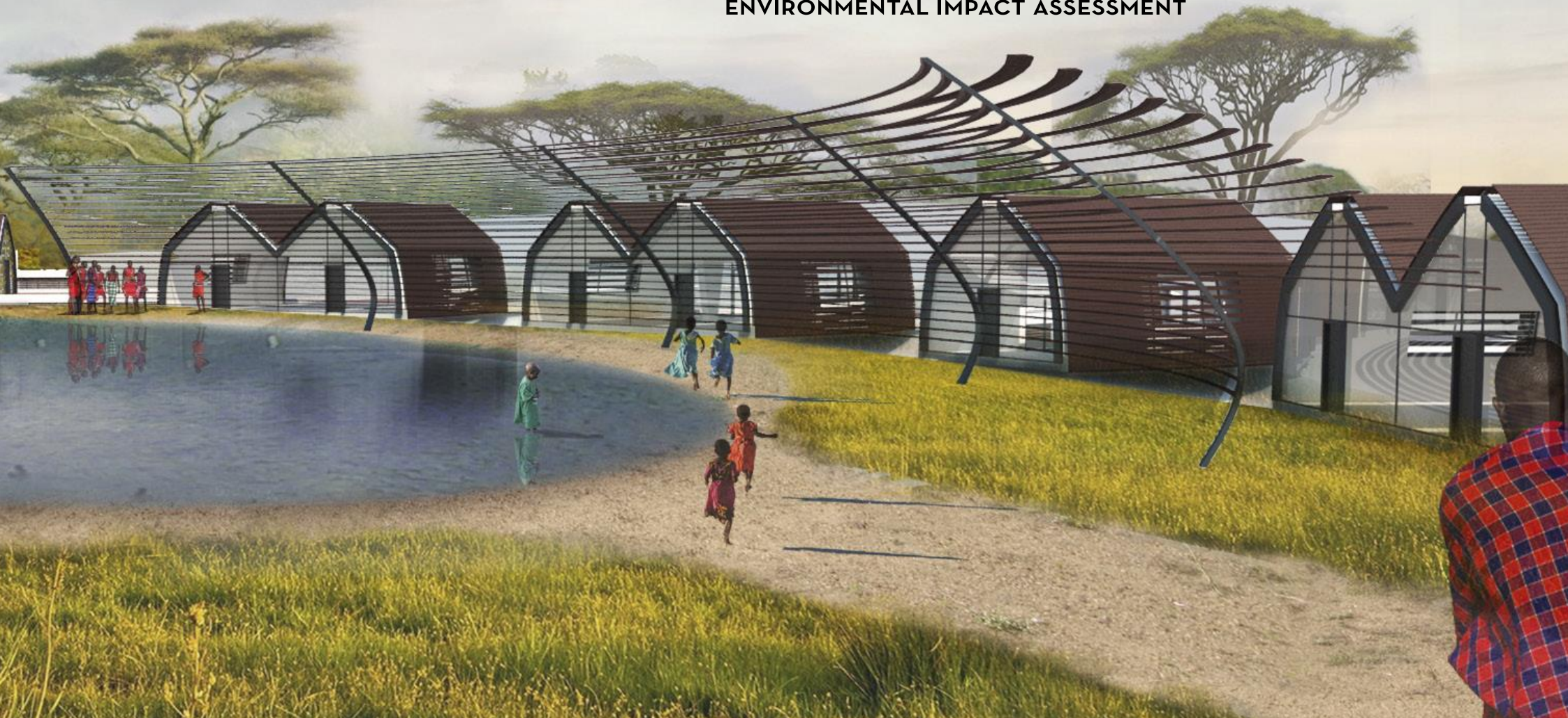




THE HAPPY CHILDHOOD VILLAGE - TANZANIA

AN INITIATIVE BY
THE HAPPY CHILDHOOD FOUNDATION - AFRICA

ENVIRONMENTAL IMPACT ASSESSMENT



EXECUTIVE SUMMARY

This Environmental Impact Assessment [EIA] report provides an analysis on both the environmental and socio-economic impacts of the Happy Childhood Village project in Arusha, Tanzania [HCV-Tanzania]. The HCV-Tanzania is an initiative by the Happy Childhood Foundation – Africa [HCF-Africa]; its objective is to make transformational impact in the lives of vulnerable children of the Arusha area and beyond, providing for them a happy and healthy childhood and preparing them for a future full of opportunities.

HCV-TANZANIA AND THE ENVIRONMENT



Renewable Energy:

30% of the total energy use will come from renewable sources.

An area of 10 000 m² is dedicated to solar farming, and the total energy coverage will grow with technological advancements.

Advanced Water Practices:

Water usage and consumption is based on the Integrated Water Resource Management [IWRM] principles, and will be consumed and recycled through efficient systems. Lateral veins likely to be located beneath the village will provide for a continuous and sustainable supply of water.



Zero-Waste Initiative:

A strategy aiming at 'Zero-Waste' will be put in place where the organic waste (about 50% from total solid waste generated) will be composted at both a household and a community level; plastics and metals will be source sorted and sent for recycling, re-useable materials will be used in arts and crafts workshops, contributing to the sustainability of the programs and to a reduced solid waste generation.

Low Carbon-Footprint:

From construction to operation, HCV-Tanzania is dedicated to a low carbon-footprint management system. Using green and prefabricated building material, electric ground transportation, and energy efficient technology and architecture, the Happy Childhood Village's dependency on oil and gas is limited, thus contributing to a significant reduction in Green House Gas [GHG] emissions throughout the village's life cycle.



Smart Architecture:

The village's architecture is in symbiosis with the surrounding environment. It is blended in the landscape, and conserves both energy (through efficient natural lighting and ventilation systems) and culture which is inspired by native indigenous architectural designs. All structures in HCV-Tanzania are accessible to children with physical impairments.

HCV-TANZANIA'S SOCIAL REACH

Direct Beneficiaries:



At full capacity, **1,200** people in the village every day

- **850** children receiving basic necessities, protection, health care, education, and recreation
- **180** employed local personnel
- **170** visiting partners, advisors, volunteers, family members, and guests



Outreach Initiatives:

HCV-Tanzania will be a knowledge incubator thanks to the transfer of know-how from best-in-class technical partners and advisors to our local partner the Catholic Archdiocese of Arusha. The CAA will disseminate the newly acquired knowledge in the social facilities it already owns and operates [35+ educational facilities, 20+ health facilities, and more]; this will progressively impact for the better the lives of tens of thousands of children.

The social impact of HCV -Tanzania will be further enhanced thanks to our need-driven outreach programs championed by our social center, and to monetary injection in the local economy through employment and our income generating activities.

Science at the Service of Human Development:

HCV-Tanzania will be a scientific laboratory where science will be at the service of human development thanks to a holistic monitoring and impact measurement program, that will serve in bettering the lives of countless individuals through continuous improvement, scalability, and replicability of the Happy Childhood Village in other places.



Financial Sustainability:

The HCV-Tanzania is designed to be increasingly self-sufficient and sustainable. Income-generating activities and markets developed within the village are expected to contribute to the operational costs of the village and for some activities, to even become profitable. Income-generating activities identified to date include: visitors' residence, museum, shop, coffee shop, workshop products, organic farming & market, catering, and contributions to scholarships, vocational training, and rehabilitation care.

HCV-TANZANIA'S TECHNICAL PARTNERS AND ADVISORS (to date)

- **The University of Chicago** – technical partner for early childhood education and for holistic monitoring & impact measurement
- **The Rehabilitation Institute of Chicago** - advisor for the planning phase of HCV-Tanzania's Laetitia Hatem Rehabilitation Center [LHRC]
- **Lausanne Hospitality Consulting, an affiliate of Ecole Hôtelière de Lausanne** - technical partner for hospitality management and providers of vocational training in hospitality management



HCV-TANZANIA DESCRIPTION OF COMPONENTS

The Social Center

- Provides essential social services to the children of the village
- Identifies, designs, and implements outreach programs aimed at developing the local communities and tribes
- Collects and mines data

The Laetitia Hatem rehabilitation Center [LHRC]

- Provides physical, occupational, and speech therapy, helping children regain autonomy and dignity
- Includes a nursery, an eye clinic, an ear clinic, X-ray machinery, and a laboratory
- Will accommodate up to 40 in-patients and 45+ out-patients

The School and Vocational Training Program

- Includes a kindergarten, a primary school, and a secondary school serving up to 540 resident and non-resident children
- Includes ten workshops in traditional and other crafts
- Provides vocational training to youths in arts, entrepreneurship, financial literacy, agriculture & farming, and hospitality management

The Children's Residence

- Provides a home and family to up to 170 vulnerable children and infants in 20 individual houses

The Visitors' Residence

- Hosts up to 40 visitors, partners, and guests in 10 individual houses

The Life Center

- Includes cafeterias, a Tanzanian restaurant, central laundry facility, club houses for children, youths, and adults, and recreational space, all under one common roof to reduce waste and energy consumption

The Museum

- Includes a permanent as well as temporary exhibitions to display with pride tribal/traditional as well as modern & contemporary art
- Provides an inspirational environment for children

The Gymnasium and Stadium

- Includes a gymnasium and a stadium where children exercise, remain healthy, and future athletes are born

